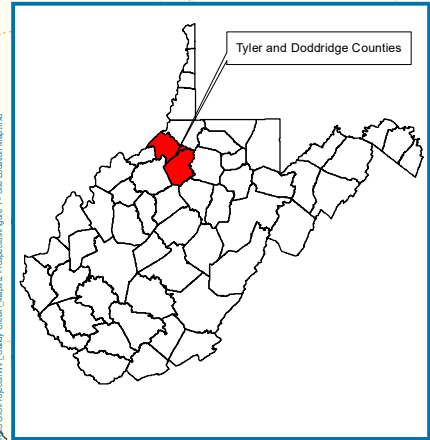
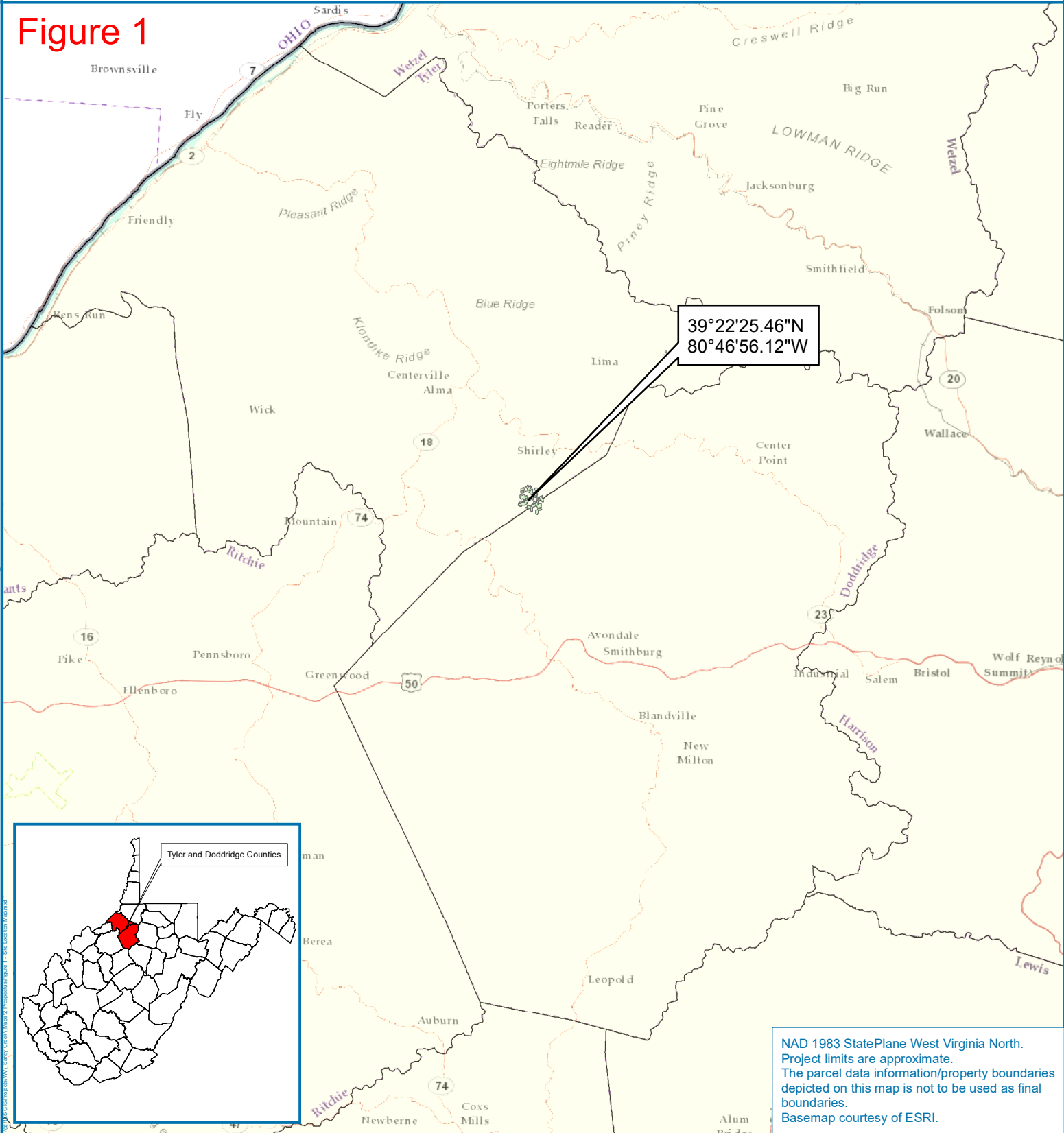


Directions to the Site: Head east on I-64 E. Follow I-64 E and I-77 N to US-50 (exit 176) in Parkersburg (126 miles). Turn right onto US-50 E/Northwestern pike (43.2 miles). Turn left onto WV-18 N (0.5 miles). Turn right to stay on WV-18 N (226 ft). Turn left onto Davis St/Old US 50 W (0.4 miles). Turn right onto WV-18 N/Sistersville Pike (5.5 miles). Slight right onto Slaughter Run Road (1.6 miles). Turn left onto Camp Mistake Road (430 feet). Keep right to continue on Jefferson Run-Wilbur Hill Road (1.2 miles). Turn right onto Co Road 6/2 (0.3 miles). Arrive at destination

Figure 1



NAD 1983 StatePlane West Virginia North.  
Project limits are approximate.  
The parcel data information/property boundaries  
depicted on this map is not to be used as final  
boundaries.  
Basemap courtesy of ESRI.

Figure 1: Site Location Map  
Sandy Creek Mitigation Bank

Tyler and Doddridge Counties, West Virginia  
West Union and Shirley Quadrangle

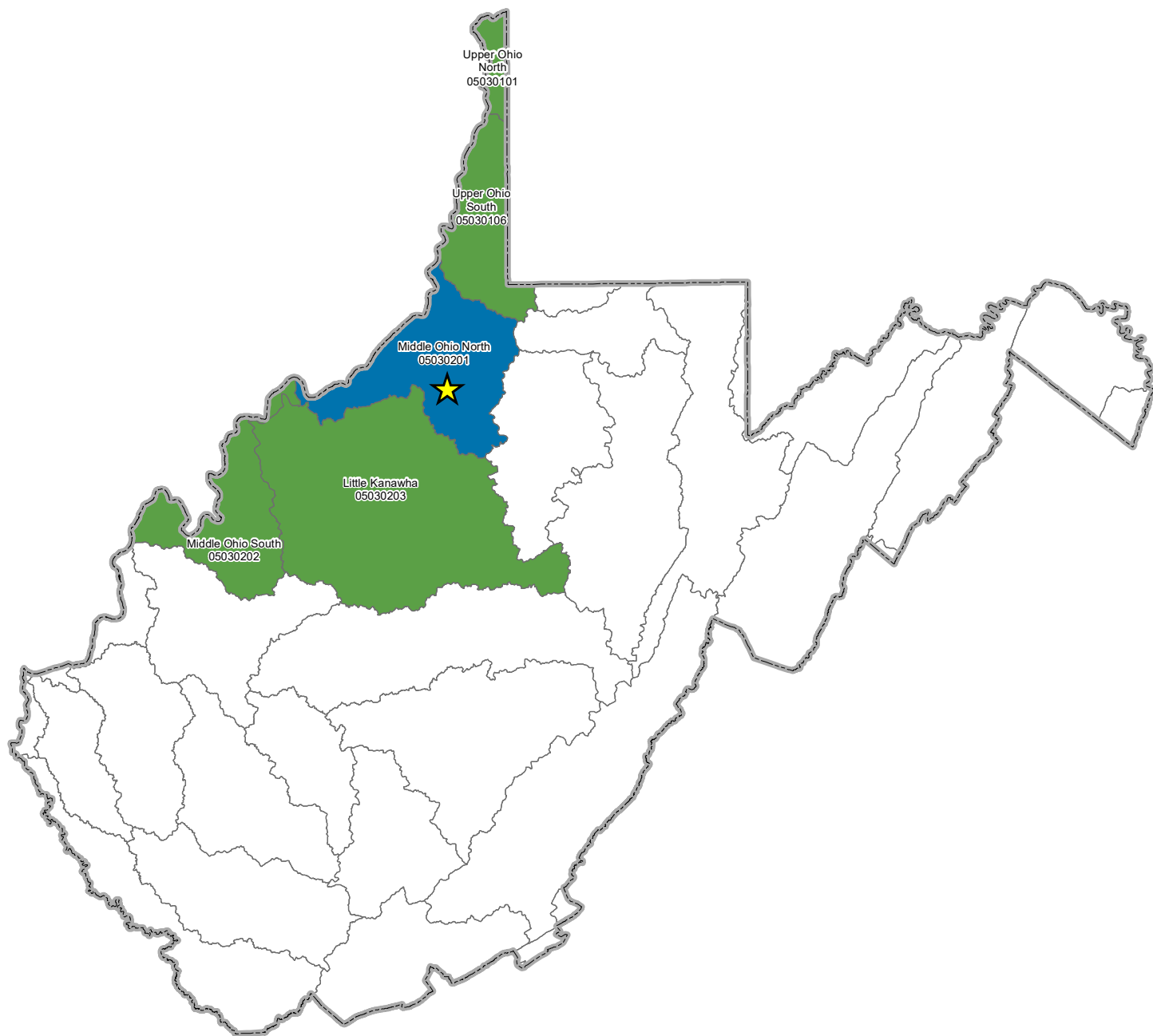
Date: 4/12/2019

Drawn by: NDR

Checked by: KLR






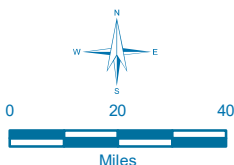
# Figure 2



Horizontal Datum is NAD83 StatePlane WV N.  
Project limits are approximate.

## Legend

-  Sandy Creek Mitigation Bank Site
-  Primary Service Area
-  Secondary Service Area



## Exhibit B Sandy Creek Mitigation Bank Site Service Area Map Tyler & Doddridge Counties West Virginia

Date: 4/8/2019

Drawn by: KPR

Checked by: KLR







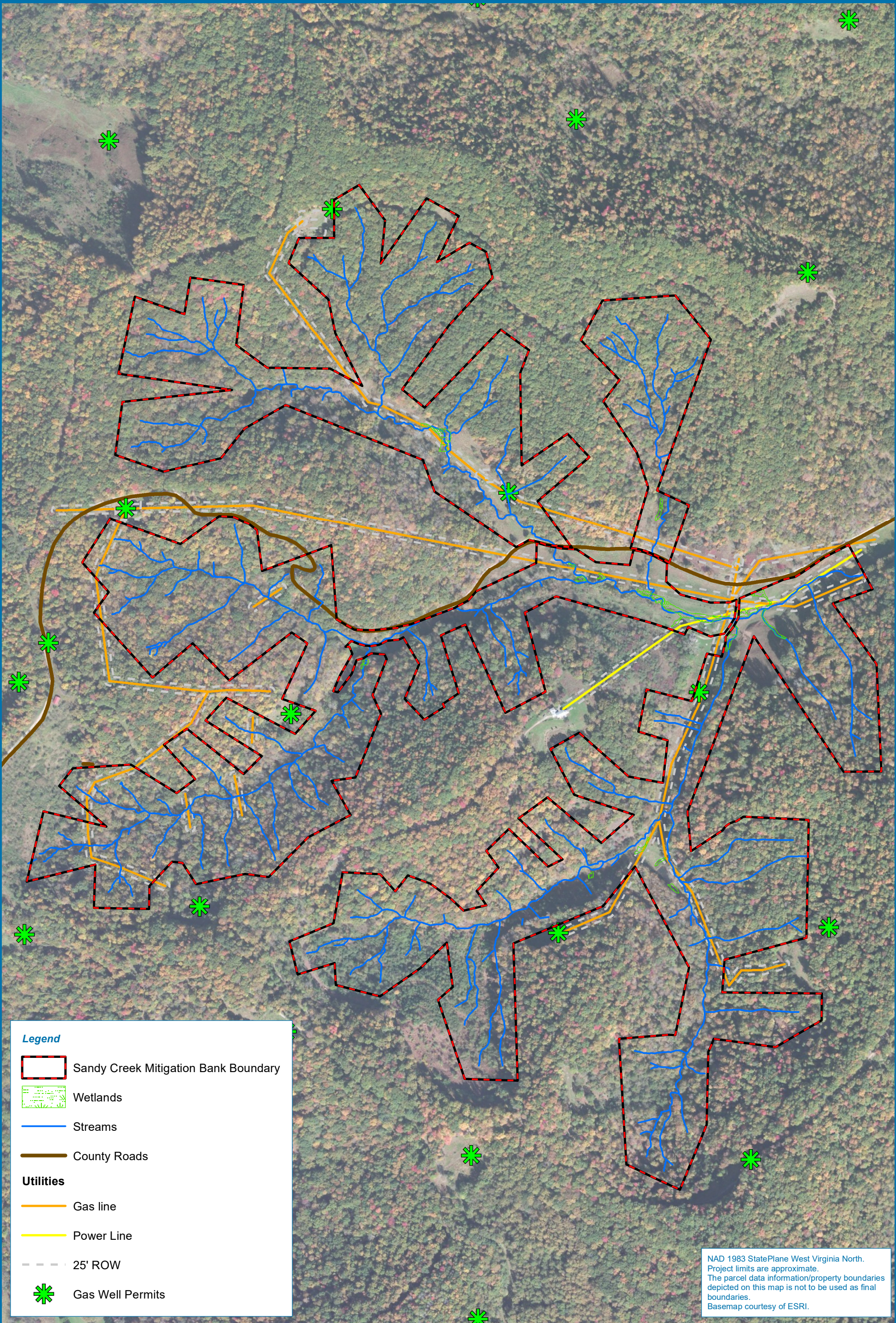
**Figure 3**

**Figure 3: USGS Topographic Map  
Sandy Creek Mitigation Bank**  
Tyler and Doddridge Counties, West Virginia  
West Union and Shirley Quadrangles

Date: 4/12/2019
Drawn by: NDR
Checked by: KLR







**Legend**

- Sandy Creek Mitigation Bank Boundary
- Wetlands
- Streams
- County Roads
- Utilities**
  - Gas line
  - Power Line
  - 25' ROW
- Gas Well Permits

NAD 1983 StatePlane West Virginia North.  
Project limits are approximate.  
The parcel data information/property boundaries  
depicted on this map is not to be used as final  
boundaries.  
Basemap courtesy of ESRI.

**Figure 4**

**Figure 4: Existing Conditions Map  
Sandy Creek Mitigation Bank**

Tyler and Doddridge Counties, West Virginia  
West Union and Shirley Quadrangles

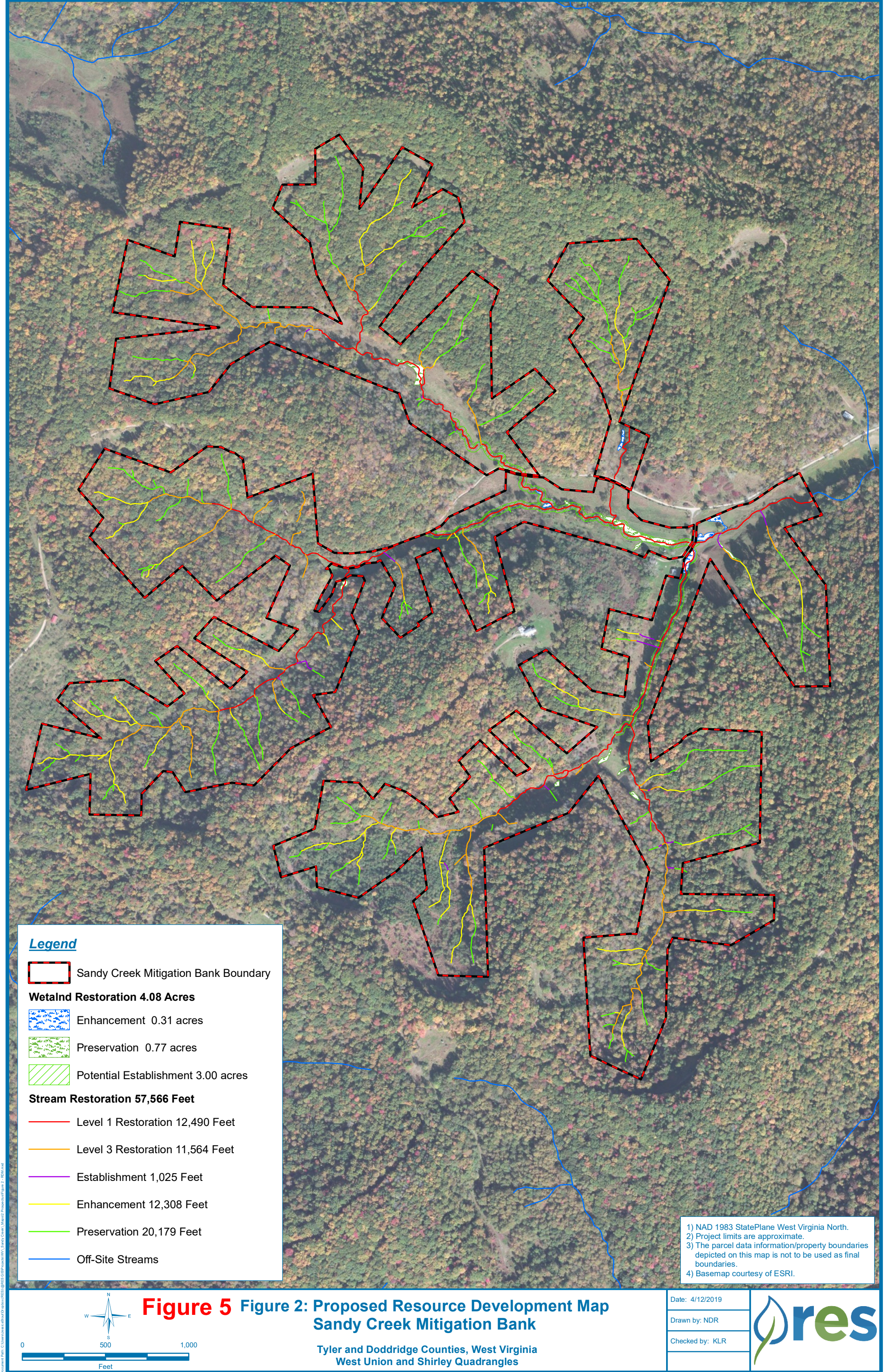
Date: 4/12/2019

Drawn by: NDR











Checked by: KLR



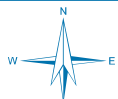




**Legend**

-  Sandy Creek Mitigation Bank Boundary
- Wetland Restoration 4.08 Acres**
-  Enhancement 0.31 acres
-  Preservation 0.77 acres
-  Potential Establishment 3.00 acres
- Stream Restoration 57,566 Feet**
-  Level 1 Restoration 12,490 Feet
-  Level 3 Restoration 11,564 Feet
-  Establishment 1,025 Feet
-  Enhancement 12,308 Feet
-  Preservation 20,179 Feet
-  Off-Site Streams

- 1) NAD 1983 StatePlane West Virginia North.  
2) Project limits are approximate.  
3) The parcel data information/property boundaries depicted on this map is not to be used as final boundaries.  
4) Basemap courtesy of ESRI.



0 500 1,000  
Feet

**Figure 2: Proposed Resource Development Map**  
**Sandy Creek Mitigation Bank**

Tyler and Doddridge Counties, West Virginia  
West Union and Shirley Quadrangles

Date: 4/12/2019

Drawn by: NDR

Checked by: KLR

